

The FFT Governor Dashboard has been produced by FFT, working in partnership with the National Governors' Association and the Wellcome Trust. The dashboard helps school governors to hold schools to account, support and challenge the leadership team and make more informed strategic decisions.

The dashboard helps with answering these six key questions:

1. How does attainment and pupil progress at my school compare to the national average?
2. How are we performing in different subjects?
3. Do we have any under-performing groups of pupils?
4. How might the context of our school affect our performance?
5. How does pupil attendance compare to the national average?
6. What are the strengths and weaknesses of your school?

The Governor Dashboard is one part of the FFT Aspire dashboard series, a set of high quality, simple-to-use reports for school leaders, teachers and governors. The dashboards support rigorous self-evaluation, inspection preparation and in-depth planning using the latest available national data.

Guidance on using the dashboard

Gauges these display headline indicators and whether actual results and pupils' progress are in line with the national average, or significantly above or below the national average.



Strengths and weaknesses these are relative to your school.

Statistical significance green plus signs (+) and red minus signs (-) highlight where either actual results or pupils' progress is significantly above or below the national average.

Actual results a range of measures such as averages and thresholds.

Pupils' progress a comparison between the actual results and the FFT estimated attainment based upon typical national progress this year.

Small cohorts for small pupil cohorts we will suppress the data with an asterisk (*). Where it is not possible to calculate a figure or if data is not available this will be shown by a dash (-).

Data sources the dashboard is generated using data from FFT Aspire which includes data sourced from the DFE (National Pupil Database) and data calculated by FFT. The headline performance indicators will be consistent with RAISEonline and the DFE School Performance tables.

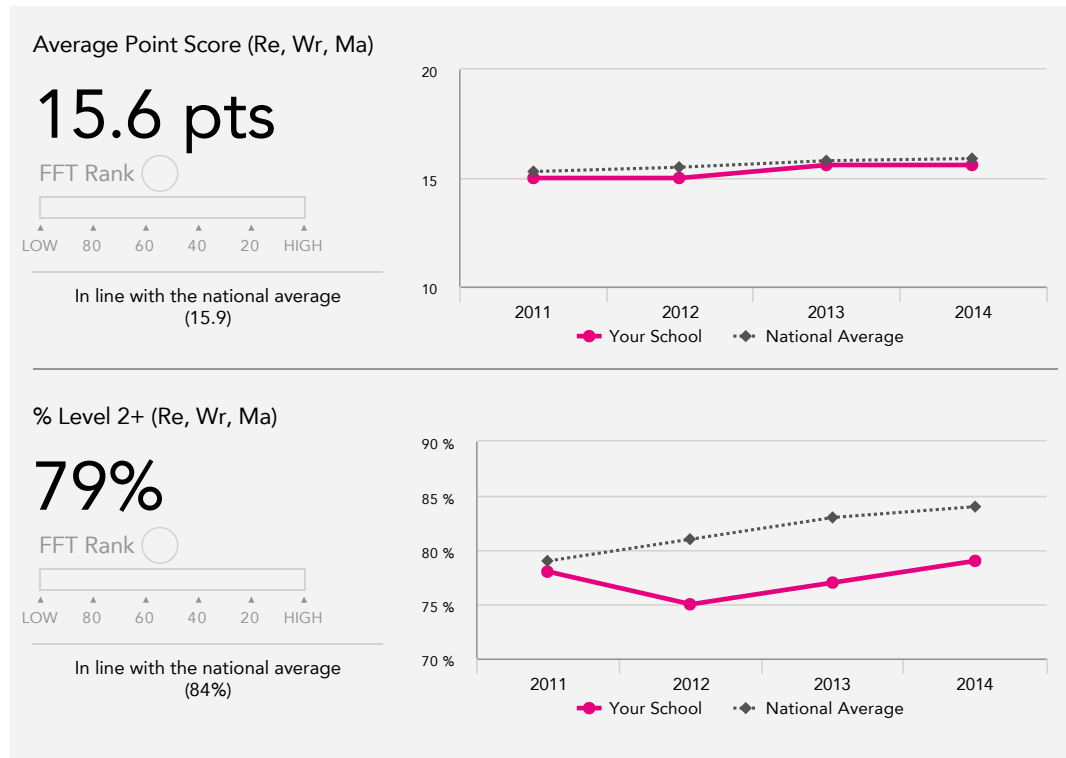


St George's Community Primary School

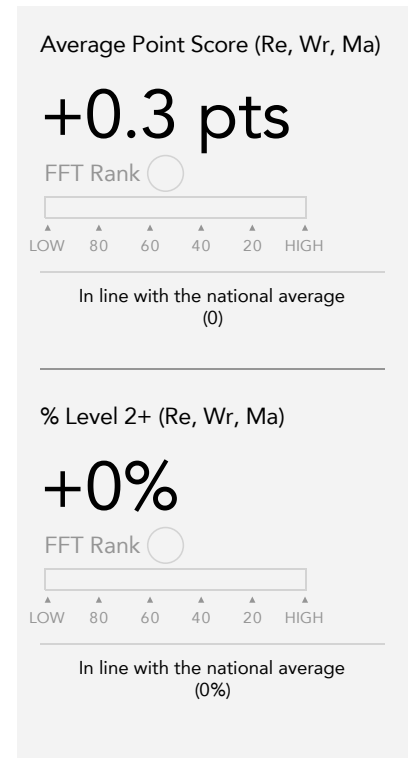
Attainment & achievement

2014 KS1 VA

KS1 Attainment 2014



KS1 Achievement 2014



KS1 performance summary

	Actual results			Pupil progress		
	2012	2013	2014	2012	2013	2014
Number of pupils / % matched	60	60	53	100%	100%	98%
Average level (Re, Wr, Ma)	2B	2B	2B	-0.3 ⬇	+0.1 ⬆	+0.0
Average Point Score (Re, Wr, Ma)	15.0	15.6	15.6	-1.8 ⬇	+0.4 ⬆	+0.3
% Level 2+ (Re, Wr, Ma)	75%	77%	79%	-16% ⬇	-4% ⬇	+0%
% Level 2B+ (Re, Wr, Ma)	50%	53%	62%	-27% ⬇	-3% ⬇	+3%
% Level 3+ (Re, Wr, Ma)	7%	15%	17%	-12% ⬇	+9% ⬆	+8%
Average Point Score Reading	15.9	16.2	15.8	-1.5 ⬇	+0.4 ⬆	+0.0
% Level 2+ Reading	85%	87%	81% ⬇	-9%	-1%	-5%
% Level 3+ Reading	32%	33%	32%	-11%	+14% ⬆	+8%
Average Point Score Writing	13.9	14.7	15.1	-2.0 ⬇	+0.3 ⬆	+0.6
% Level 2+ Writing	75%	77%	79%	-17%	-6%	-2%
% Level 3+ Writing	10%	22%	23%	-14% ⬇	+13% ⬆	+11% ⬆
Average Point Score Maths	15.2	16.0	15.9	-1.9 ⬇	+0.5 ⬆	+0.2
% Level 2+ Maths	88%	90%	85%	-8%	-1%	-5%
% Level 3+ Maths	12%	25%	26%	-24% ⬇	+11% ⬆	+8%

St George's Community Primary School

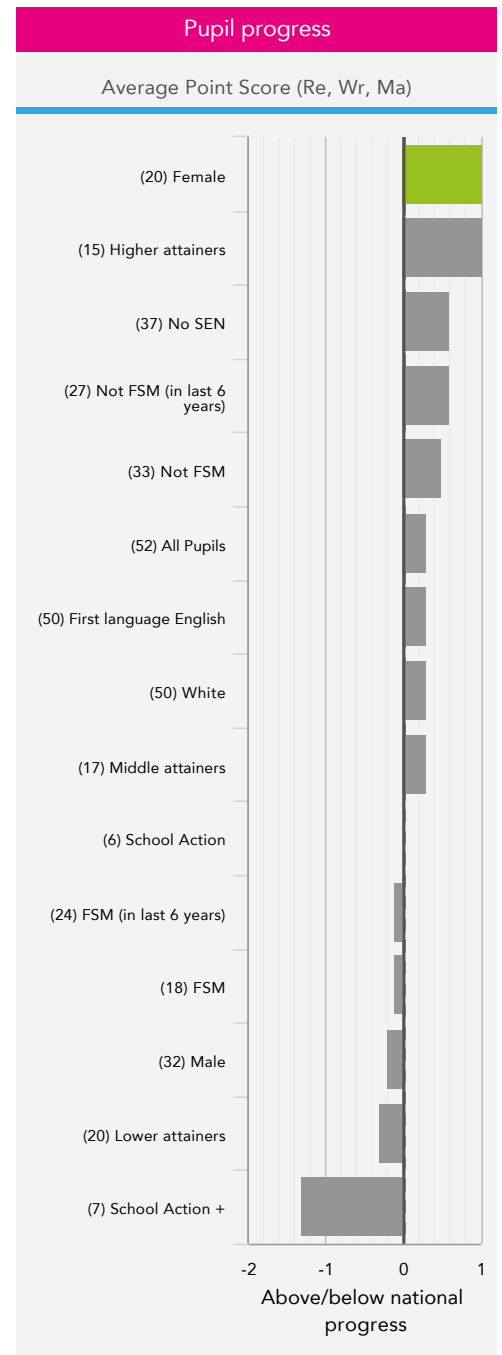
Pupil groups

2014 KS1 VA

KS1 Pupil groups performance 2014

	Pupils	Actual results			Pupil progress			
		Average Point Score (Re, Wr, Ma)	% Level 2+ (Re, Wr, Ma)	% Level 3+ (Re, Wr, Ma)	Average Point Score (Re, Wr, Ma)	% Level 2+ (Re, Wr, Ma)	% Level 3+ (Re, Wr, Ma)	
Summary	All Pupils	53	15.6	79%	17%	+0.3	+0%	+8%
Gender	Male	33	14.2	67%	9%	-0.2	-4%	+3%
	Female	20	18.0	100%	30%	+1.0 +	+6%	+17%
Prior Attainment	Higher attainers	15	19.4	100%	47%	+1.0	+2%	+22%
	Middle attainers	17	16.3	88%	12%	+0.3	-3%	+7%
	Lower attainers	20	12.2	55%	0%	-0.3	+2%	-1%
Pupil Premium	FSM (in last 6 years)	25	13.9	68%	8%	-0.1	+1%	+3%
	Not FSM (in last 6 years)	27	17.1	89%	26%	+0.6	-1%	+15%
SEN	School Action	6	13.0	67%	0%	+0.0	+11%	-1%
	School Action +	7	9.5	14%	0%	-1.3	-18%	-0%
	Statement	*	*	*	*	*	*	*
	No SEN	38	16.9	92%	21%	+0.6	+2%	+11%
EAL	First language not English	*	*	*	*	*	*	*
	First language English	51	15.5	78%	18%	+0.3	-0%	+10%
FSM	FSM	19	14.5	74%	11%	-0.1	+1%	+4%
	Not FSM	33	16.2	82%	21%	+0.5	-0%	+12%
Ethnicity	White	51	15.5	78%	18%	+0.3	-0%	+10%
	Chinese	*	*	*	*	*	*	*
	Unknown	*	*	*	*	*	*	*

KS1 Achievement 2014



KS1 subject performance 2014

	Actual results			Pupil progress			Actual results over time
	2012	2013	2014	2012	2013	2014	
Number of pupils / % matched	60	60	53	100%	100%	98%	
Reading							
% Level 2+	85%	87%	81% -	-9%	-1%	-5%	
% Level 2B+	65% -	70%	70% -	-23% -	-5% ↑	-5%	
% Level 3+	32%	33%	32%	-11%	+14% ↑	+8%	
Average level	2B	2A	2B	-0.2 -	+0.1 ↑	+0.0	
Average Point Score	15.9	16.2	15.8	-1.5 -	+0.4 ↑	+0.0	
Writing							
% Level 2+	75%	77%	79%	-17%	-6%	-2%	
% Level 2B+	52% -	57%	62%	-27% -	-4% ↑	-0%	
% Level 3+	10%	22%	23%	-14% -	+13% ↑	+11% +	
Average level	2C	2B	2B	-0.3 -	+0.1 ↑	+0.1	
Average Point Score	13.9	14.7	15.1	-2.0 -	+0.3 ↑	+0.6	
Maths							
% Level 2+	88%	90%	85%	-8%	-1%	-5%	
% Level 2B+	70%	70%	70%	-19% -	-4%	-5%	
% Level 3+	12%	25%	26%	-24% -	+11% ↑	+8%	
Average level	2B	2A	2B	-0.3 -	+0.1 ↑	+0.0	
Average Point Score	15.2	16.0	15.9	-1.9 -	+0.5 ↑	+0.2	
Speaking and Listening							
% Level 2+	87%	85%	83%	-8%	-3%	-4%	
% Level 3+	15%	20%	17%	-23% -	+5%	-3%	
Average level	2	2	2	-0.3	+0.0	-0.1	
Average Point Score	14.9	15.2	15.0	-1.7	+0.0	-0.3	
Science							
% Level 2+	83%	85%	85%	-12%	-4%	-4%	
% Level 3+	10% -	23% ↑	21%	-26% -	+9% ↑	+3%	
Average level	2 -	2	2	-0.3 -	+0.0 ↑	+0.0	
Average Point Score	14.4 -	15.4	15.3	-2.0 -	+0.3 ↑	+0.0	

Context

Context · Year 2 · 2013 / 2014

		Pupils	Proportion	
			School	National
Summary	All Pupils	52	100%	100%
Gender	Male	32	62%	51%
	Female	20	38%	49%
Prior Attainment	Higher attainers	14	27%	34%
	Middle attainers	17	33%	32%
	Lower attainers	20	38%	32%
Pupil Premium	FSM (in last 6 years)	25	48%	26%
	Not FSM (in last 6 years)	27	52%	74%
SEN	School Action	6	12%	10%
	School Action +	7	13%	6%
	Statement	*	*	*
	No SEN	38	73%	82%
EAL	First language not English	*	*	*
	First language English	51	98%	81%
FSM	FSM	19	37%	18%
	Not FSM	33	63%	82%
Ethnicity	White	51	98%	75%
	Chinese	*	*	*
	Unknown	*	*	*

Absence · Year 2 · 2013 / 2014

		Pupils	Absence		Persistent absentees	
			School	National	School	National
Summary	All Pupils	52	7%	5%	10%	3%
Gender	Male	32	7%	5%	9%	3%
	Female	20	8%	5%	10%	2%
Prior Attainment	Higher attainers	14	8%	4%	7%	1%
	Middle attainers	17	5%	4%	0%	2%
	Lower attainers	20	8%	6%	20%	5%
Pupil Premium	FSM (in last 6 years)	25	9%	6%	20%	6%
	Not FSM (in last 6 years)	27	5%	4%	0%	1%
SEN	School Action	6	7%	6%	17%	5%
	School Action +	7	7%	6%	0%	6%
	Statement	*	*	*	*	*
	No SEN	38	7%	4%	11%	2%
EAL	First language not English	*	*	*	*	*
	First language English	51	7%	4%	10%	2%
FSM	FSM	19	9%	6%	16%	7%
	Not FSM	33	6%	4%	6%	2%
Ethnicity	White	51	7%	4%	10%	2%
	Chinese	*	*	*	*	*
	Unknown	*	*	*	*	*